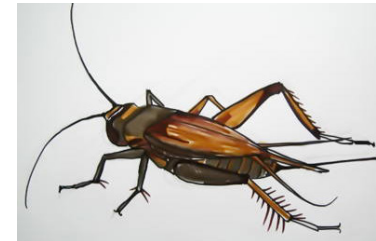


FITTEX IL-KELMA

a	b	a	ħ	r	i	j	a	g	f	s	k	n	m	b
m	u	e	m	s	x	n	d	z	q	a	n	f	u	d
j	g	ġ	r	k	w	m	s	f	b	w	g	h	s	b
n	ħ	b	m	s	i	i	j	a	v	o	d	f	b	n
ħ	a	n	ż	i	r	l	a	r	t	g	w	n	i	ġ
d	r	s	a	k	i	l	j	h	f	l	i	h	e	v
z	w	i	r	d	i	e	n	a	ġ	f	ż	n	ħ	a
s	i	d	ż	j	u	p	k	j	v	l	g	k	i	k
s	e	s	u	a	l	i	r	t	e	n	ħ	j	l	g
z	n	w	r	k	f	e	n	n	a	k	a	m	l	a
f	ġ	s	ġ	u	r	d	i	e	n	n	m	l	e	m
ġ	t	d	m	k	j	z	q	w	v	a	o	p	j	a
b	f	a	r	f	e	t	t	i	l	l	e	j	l	a

Dawn l-animali kollha huma attivi billejl.
Kem se jirnexxilek issib minnhom?

- | | |
|-----------------|-----------------|
| baħrija | milleped |
| bugħarwien | musbieħ il-lejl |
| far | qanfud |
| farfett il-lejl | wirdiena |
| ġurdien | wiżgħa |
| ħanzir l-art | żarżur |
| kamla | |



żarżur



kamla

