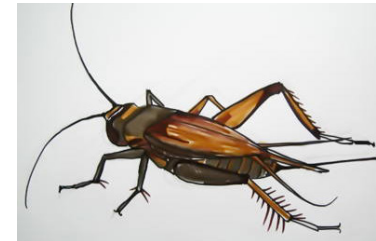


WORD SEARCH

m	i	l	l	i	p	e	d	e	n	m	b	m	a
z	x	k	g	f	x	l	v	l	m	o	u	s	e
s	z	k	l	j	f	b	l	d	v	t	m	k	l
i	j	c	o	c	k	r	o	a	c	h	j	j	m
l	z	b	w	n	v	a	l	n	r	m	v	a	d
v	j	s	w	j	n	t	d	s	i	s	f	s	f
e	m	f	o	x	g	f	z	a	c	x	g	l	v
r	c	x	r	a	n	g	b	l	k	x	b	u	c
f	s	c	m	v	h	e	d	g	e	h	o	g	d
i	c	b	d	z	g	c	k	g	t	b	k	n	k
s	n	a	i	l	n	k	z	a	c	g	a	s	g
h	s	t	d	w	o	o	d	l	o	u	s	e	c

These animals are active at night. How many of them can you find?

- | | |
|-----------|------------|
| bat | moth |
| cockroach | mouse |
| cricket | rat |
| gecko | silverfish |
| glow worm | slug |
| hedgehog | snail |
| millipede | woodlouse |



cricket



silverfish

